

AHEAD FlashStack Integrated Deployment Solutions

Whether you're building AI infrastructure, scaling inference at the edge, or advancing your virtualization journey, AHEAD Foundry™ provides fully built FlashStack integrated racks to accelerate technology adoption with speed, consistency, and scale. From design and integration to global logistics and deployment, Foundry helps reduce deployment timelines and deliver rapid time to value, providing unparalleled visibility along the way. By standardizing infrastructure with FlashStack, AHEAD enables organizations to modernize efficiently across datacenter and edge environments.



[Schedule a Meeting](#)

AHEAD building blocks for FlashStack are designed specifically for organizations looking to either take the next steps in their datacenter virtualization journey, or to embark on new artificial intelligence initiatives.

AHEAD's FlashStack solutions are fully-integrated and configured through [AHEAD Foundry™](#) with the applicable foundational technologies, then deployed directly to sites. Our proven methodology ensures FlashStack deployments run smoothly and sites are up and running quickly to maximize application deployment times and full asset value.

AHEAD services go beyond rack integration to full-scale global logistics and post-implementation professional and managed services. Fully configured and integrated racks are safely and securely deployed anywhere in the world and carry the right certifications and documentation to avoid delays along the way. Systems arrive fully functional and are operational within hours, not weeks.

By engaging with AHEAD for your FlashStack needs, you benefit from end-to-end visibility with the [AHEAD Hatch® IT Lifecycle Management Platform](#). From asset procurement and production status by work center, to real-time shipment status and end-state rack configuration and installation details, Hatch enables your team to track every step for every location, and beyond.

Flexible Building Block Configurations

AHEAD engineers – working together with Cisco® and Pure® teams – have created a reference architecture approach to FlashStack solutions with appropriate sizing and high availability design. FlashStack design methodology allows for any scale deployment, from starter inferencing architectures, to application-specific compute and storage pods, to full datacenter scale virtualization, along with AI infrastructure deployments at scale.

Wherever you are in your journey, Cisco and Pure technology provides a proven solution platform with a scalable reference architecture design, all brought together by the AHEAD Foundry Engineering and Build Teams.

Our specialists work with your teams to custom design, size, and scale your end-state solution. We assess workloads, both for traditional infrastructure and for artificial intelligence. We determine sizing for storage and compute, we assess and plan for appropriate network architecture, and we validate your power needs, your facility cooling capabilities, and your connectivity needs. Whether your workloads demand small, medium, or large rack deployments – or any combination – these options are meticulously engineered and configured to optimize FlashStack for performance and reliability.

AHEAD's Integrated Rack Solution Includes:

Full-Rack and Integrated Multi-Rack Assembly:

Systems assembled, imaged, and configured to order, and installed into racks cabled with network switches, PDUs and any other requirements

Cisco Compute and/or GPU (IG) Servers and Networking:

High-density servers designed for maximum performance with modern high-speed networking interconnectivity

Pure Storage: Scalable storage arrays that push the boundaries for capacity and density for general workloads and AI with Pure FlashBlade and Flash Array

Unparalleled Efficiency: Power savings, automation, and sustainability

Ready to Run Infrastructure: Workloads in days, not months

Full Lifecycle Visibility: Full asset visibility from order to EOL



We design small, medium, and large reference rack-integrated FlashStack configurations based on the workload in a fully integrated stack with networking, cabling, PDUs, and rack infrastructure.

Pre-Deployment Rack Integration

Every detail is managed across the physical and logical setup of FlashStack to deploy as a complete integrated solution

Integration of Cisco UCS, Pure Storage and Cisco Network Fabric

Network and power cable installation ensures redundancy, reliability, and efficiency

PDUs and racks are specified to provide consistent power distribution for maximum uptime

Configuration and Testing

Base configuration of FlashStack nodes, storage, and network switches prepare the systems

Firmware is updated to the required levels, meeting Cisco and Pure certification requirements, maximizing availability, and enhancing security

Intersight and Purity operating system image is loaded to minimize on-site configuration

As-built data harvesting and documentation is automatically uploaded to Hatch

Deployment to Sites

Post-configuration, final quality checks are performed

Racks are securely shipped to end locations in well-protected crates

Optional on-site white glove rack installation services with easy-to-follow instructions are included to power up and connect the solution to the on-site network

Final FlashStack Integration On-site

Connection is made to on-site network and directory services for seamless integration into the existing identity management infrastructure

AHEAD technical resources are available as needed to perform on-site setup

Key Partners:



AHEAD FlashStack Integrated Solutions

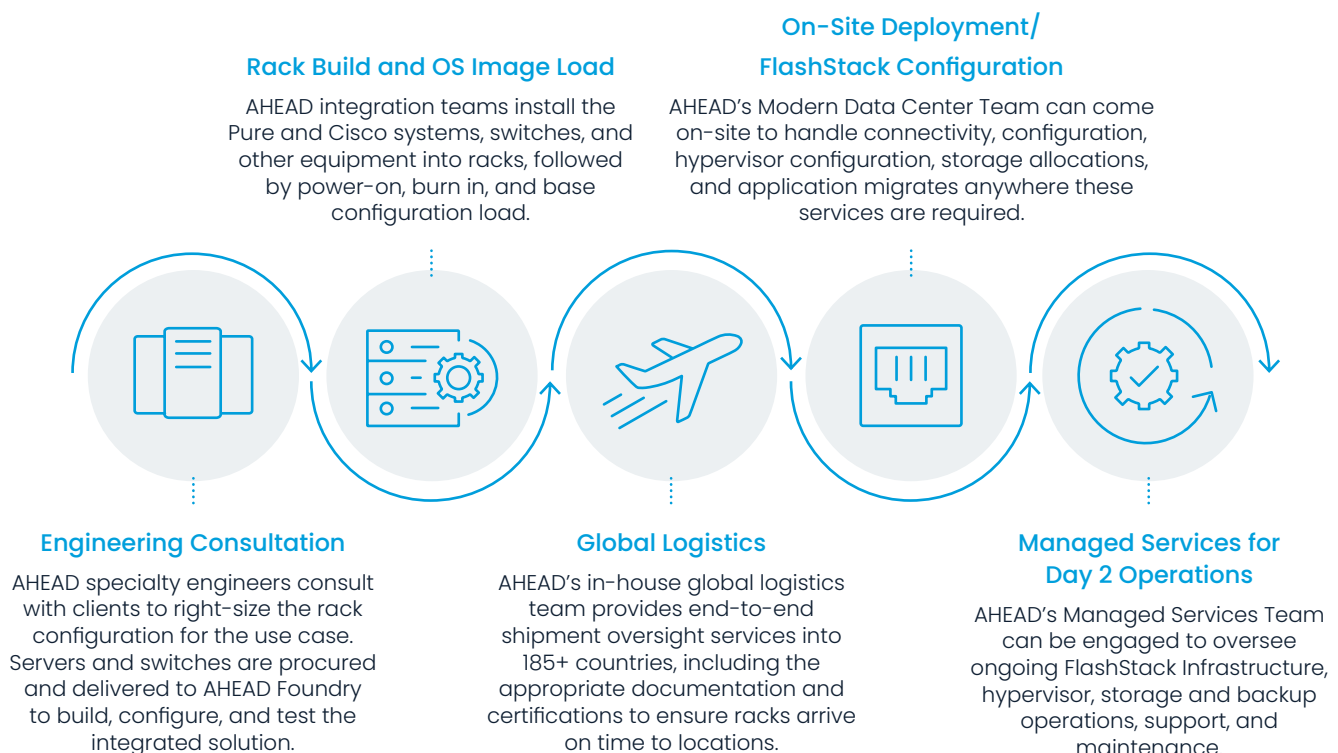
- T-shirt sizing for pre-defined configurations: small, medium, and large
- Leverage Cisco server and networking technology solutions
- Leverage Pure Storage technology solutions
- Include end-to-end design, rack integration, and deployment to sites
- Ideal for datacenter virtualization initiatives and edge/OT/factory modernization/AI

End-to-End FlashStack Capabilities from AHEAD

Beyond building, integrating, and deploying FlashStack, AHEAD can provide professional and managed services to allow your team to stay entirely hands-off.

- On-site final mile configuration services
- Intersight and Purity configuration and setup to enable unified management across on-premises and cloud environments
- Managed services for full stack infrastructure, Cisco, and Pure

AHEAD FlashStack Services



Why AHEAD for FlashStack

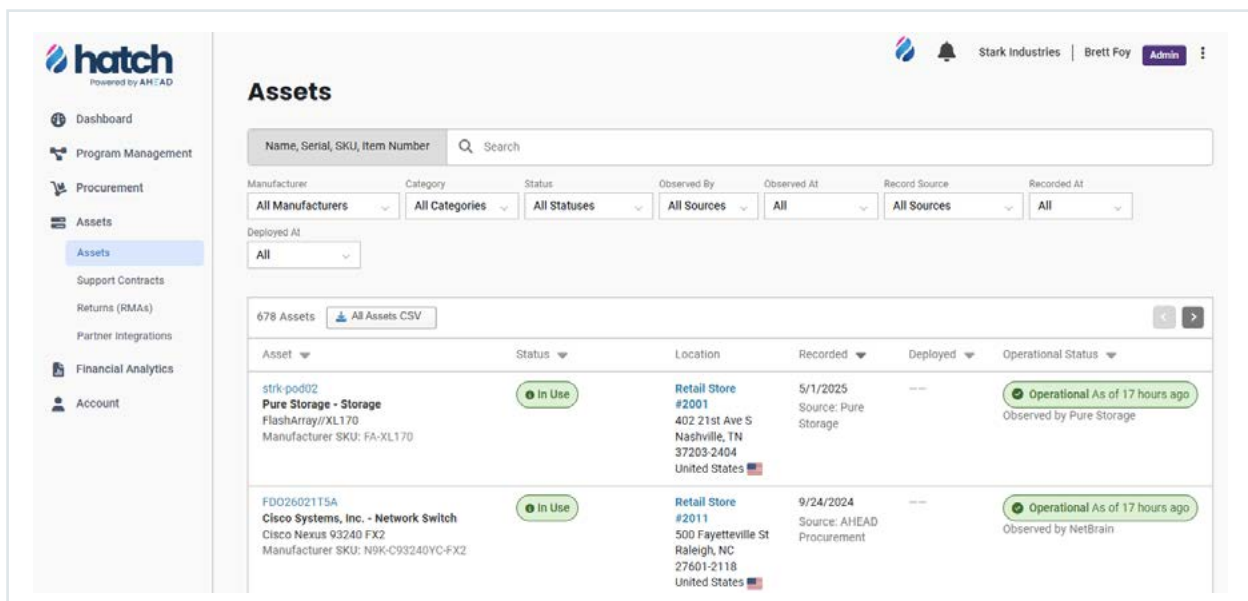
AHEAD provides a robust and efficient pathway with FlashStack to modernize your infrastructure. Contact us to learn how we help remove the burden off your IT teams to accelerate your deployment and get more value from your digital infrastructure.

IT Lifecycle Transparency with AHEAD Hatch®

AHEAD Hatch IT Lifecycle Management Platform offers unparalleled visibility and control throughout the lifecycle of your FlashStack solution. Hatch provides rich data on every asset by location down to the component level, and real-time tracking across the supply chain, from procurement to integration to shipments in transit.

Hatch helps IT teams and stakeholders stay in the loop with transparency into every stage of the project:

- Real-time procurement status for hardware acquisition and software licenses
- Integration process tracking from assembly through configuration and testing
- Rack elevation mapping with precise slot tracking, serial number capture for each slot, detailed PDU positioning and serial data, PSU serial information, and more
- Lifecycle management for ongoing system updates, service entitlements, and maintenance records
- In-house logistics team experienced in exporting technology systems to 185+ countries
- Real-time tracking across the shipping and delivery process, ensuring transparency from start to finish
- Site management from installation through final implementation and beyond, knowing every asset's status by site location



The screenshot displays the Hatch IT Lifecycle Management Platform interface. The left sidebar contains navigation links: Dashboard, Program Management, Procurement, Assets (selected), Support Contracts, Returns (RMAs), Partner Integrations, Financial Analytics, and Account. The main content area is titled "Assets" and features a search bar and several filter dropdowns: Manufacturer (All Manufacturers), Category (All Categories), Status (All Statuses), Observed By (All Sources), Observed At (All), Record Source (All Sources), and Recorded At (All). Below these filters, a table lists assets. The first asset is "strk-p0802 Pure Storage - Storage FlashArray//XL170" with status "In Use", location "Retail Store #2001", and recorded date "5/1/2025". The second asset is "FDO26021T5A Cisco Systems, Inc. - Network Switch" with status "In Use", location "Retail Store #2011", and recorded date "9/24/2024". Both assets show an "Operational As of 17 hours ago" status.

Asset	Status	Location	Recorded	Deployed	Operational Status
strk-p0802 Pure Storage - Storage FlashArray//XL170 Manufacturer SKU: FA-XL170	In Use	Retail Store #2001 402 21st Ave S Nashville, TN 37203-2404 United States	5/1/2025 Source: Pure Storage	---	Operational As of 17 hours ago Observed by Pure Storage
FDO26021T5A Cisco Systems, Inc. - Network Switch Cisco Nexus 93240 FX2 Manufacturer SKU: N9K-C93240YC-FX2	In Use	Retail Store #2011 500 Fayetteville St Raleigh, NC 27601-2118 United States	9/24/2024 Source: AHEAD Procurement	---	Operational As of 17 hours ago Observed by NetBrain

Next Four Quarter Expiration View

0 Assets

Expirations in Q2 2025

0 Assets

Expirations in Q3 2025

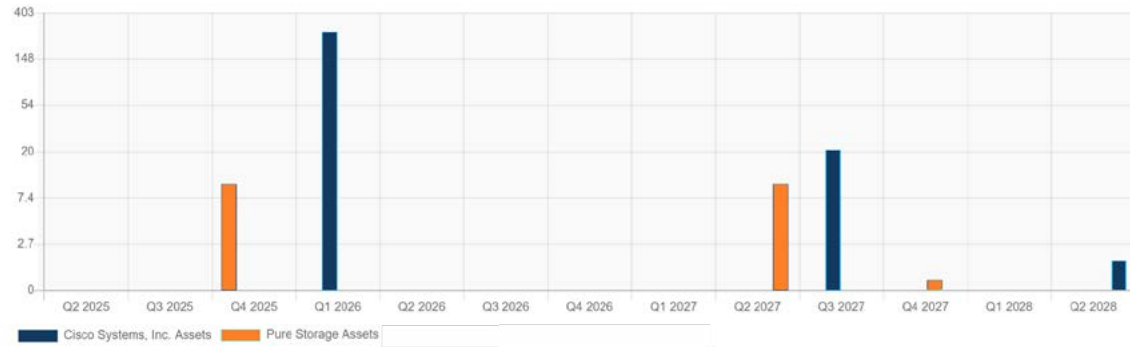
8 Assets

Expirations in Q4 2025

269 Assets

Expirations in Q1 2026

Extended Three Year Expiration Outlook



Note: The chart's y-axis marks use logarithmic intervals



Cisco Systems, Inc.

All Entitlements

269 Assets

Expirations in 0-2 Years

21 Assets

Expirations in 2-3 Years

3 Assets

Expirations in 3+ Years



Pure Storage

All Entitlements

8 Assets

Expirations in 0-2 Years

8 Assets

Expirations in 2-3 Years

1 Assets

Expirations in 3+ Years



Cisco Lifecycle Information

Provides published lifecycle milestones for Cisco assets.

● Integration Active



Cisco Historic Asset Loading

Import all assets, asset details and associated deployment sites for all Cisco assets related to an associated SmartNet contract or account.

● Integration Active



Cisco Support & Maintenance Contracts

Fetches associated support and maintenance entitlements as well as SmartNet contract details for assets.

● Integration Active



Pure Storage Device Status

Queries the current asset and operational status as well as device details for Pure assets via Pure1.

● Integration Active



Pure Storage Historic Asset Loading

Imports all assets, asset details and associated deployment sites for all Pure assets via Pure1.

● Integration Active



Pure Storage Support & Maintenance Contracts

Fetches associated support and maintenance entitlements for Pure Storage assets.

● Integration Active

AHEAD

Accelerate Your Impact
© 2025 AHEAD, Inc. All rights Reserved.

Learn more at
www.ahead.com



Schedule a Meeting